

**ESCORT**<sup>®</sup>  
iLog

21 CFR Part 17  
**READY**

ISO 9001  
BUREAU VERITAS  
Certification



Product Code: EI-2E-D-32-L

[www.escortdls.com](http://www.escortdls.com)

- Large LCD display with multi function viewing
- Bookmark readings via a simple magnet swipe
- 0.1°C Resolution provides an informative advantage
- External sensors have a temperature range of -40°C to +70°C
- Customisable alarm settings and programmable start function
- User-friendly multi-language software for easy programming and download

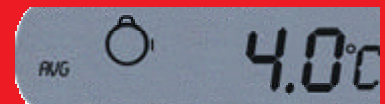
***The Intelligent Logger***



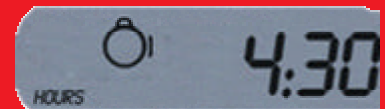
[www.escortdls.com](http://www.escortdls.com)

## iLog Specifications

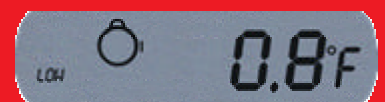
<b>Product Code</b>	EI-2E-D-32-L
<b>Temperature Range</b>	2x External -40°C to +70°C ( -40°F to +158°F)
<b>Sensors</b>	2 x External
<b>Accuracy</b>	± 0.35°C from -40 to 0 °C ± 0.25°C from 0°C to +70°C
<b>Resolution</b>	0.1°C (0.1°F)
<b>Sensor response time</b>	External Sensor – T90 of 5 minutes in moving air
<b>Liquid Crystal Display</b>	Software programmable
<b>Memory</b>	32,000 samples (16,000 samples per sensor)
<b>Software</b>	ESCORT Console (free to download via our website)
<b>Sampling Frequency</b>	1 second to 10 days
<b>Time and date</b>	Real time clock, accuracy better than 1 minute per month at ambient Multiple time zones supported
<b>Security</b>	Password protected (programmable using Escort Console software)
<b>Power Source</b>	User replaceable 3.6V ½AA lithium battery
<b>IP Rating</b>	IP65 (when external sensors are connected)
<b>Size</b>	Diameter 76mm, height 36mm
<b>Weight</b>	68 grams (including battery)
<b>Case Material</b>	Polycarbonate
<b>Storage Temperature</b>	-40°C to +85°C (-40°F to 185°F)
<b>Typical battery life</b>	1 to 2 years
<b>Recorder start-up</b>	Via magnet swipe or programmable auto start
<b>Warranty</b>	24 months, excluding batteries



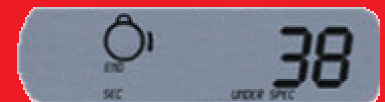
Average reading of right external sensor (in degrees Celsius)



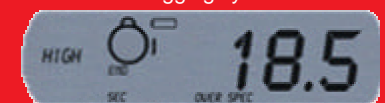
Logger armed for timer start (right external sensor activated)



Lowest recorded reading of right external sensor (in degrees Fahrenheit)



Time right external sensor spent under lower alarm specification at the end of the logging cycle



Time right external sensor spent over high alarm specifications. High alarm is on, battery is low, trip has ended.