



# Lorca

Disposable location, temperature data logger

## Real-time Tracking

**Lorca** series are made for real-time tracking of perishable shipments, collecting records of Temperature and locations. It works globally and suits the applications in both domestic and international logistics.

Cydiance Book® is integrated with Lorca series, which enables monitoring of data in graphs and charts, creating and managing shipment details, setting up alert conditions for risk management.



- Simply pull off the tab to start
- Alerts for temperature
- Geofence activities
- Notifications for shipment delivery
- Excel or PDF report for download
- Authenticated user access
- Recycle with F2C program



**Network :** Cellular 850/900/1800/1900 Mhz Quad band GSM/GPRS

**Certifications :** CE, FCC, UL, RoHS

**Calibrations :** NIST, PTB, NPL

**Battery Life\* :** In typical configurations

**Lorca -** 15days operation with temperature and location measurements reported at 15 min interval

**Lorca Plus -** 60 days operation with temperature and location measurements reported at 60 min interval

**LED :** Blue for active, Red for alarm

**Size :** 85mm × 59mm × 25mm

**Weight :** Lorca(80g) Lorca Plus(120g)

**SIM :** Internal embedded

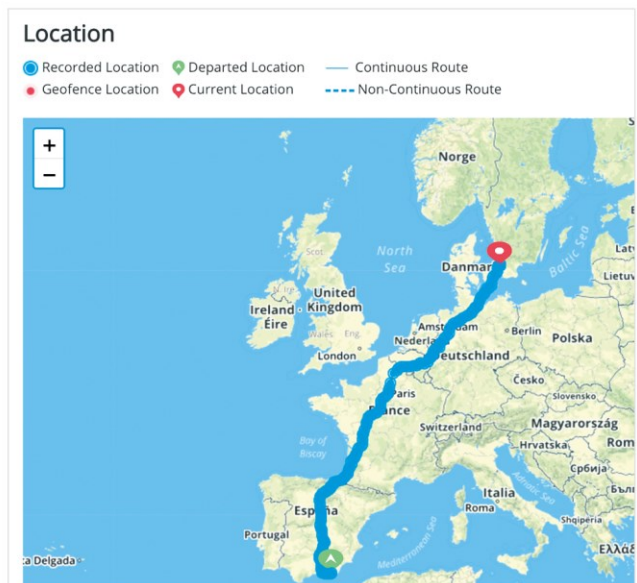
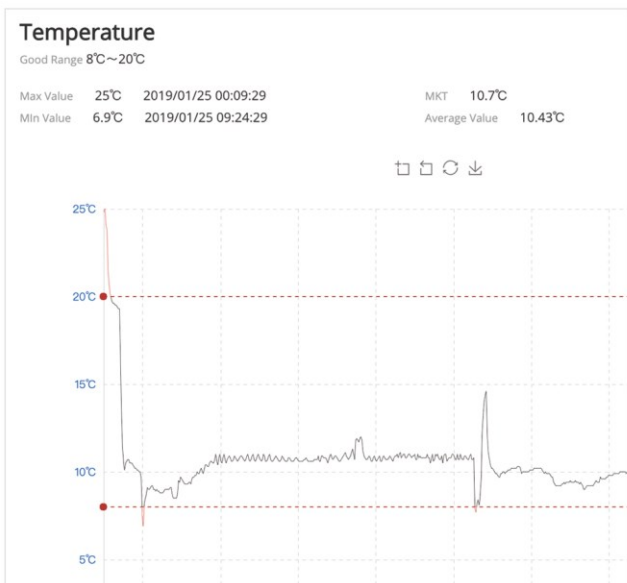
**Memory Depth :** Maximum 100days of continuous 15 minutes interval data recording

**Temperature range :** -20 °C to +60 °C operation, -20°C to +60 °C storage

**Temperature accuracy:** ±0.5°C (-10~+60°C ) ±2°C (Other range)

**Location service:** LBS base station positioning

**Tracking Platform:** [www.cydiance.cc](http://www.cydiance.cc)



\* May vary due to different condition of environment.